

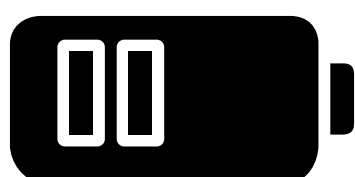


SPACE  
BANGKOK

CHANGING THE HOW  
OF WHAT WE DO  
TOWARDS RESILIENCE  
& INNOVATION

**THE PROBLEM:**

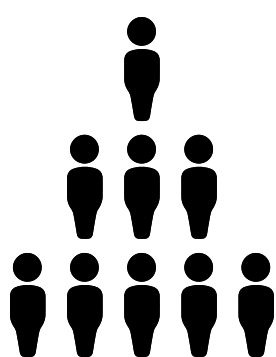
**UNWELLNESS + DEMAND FOR CREATIVE INNOVATION**



**STRAIN & DRAIN**

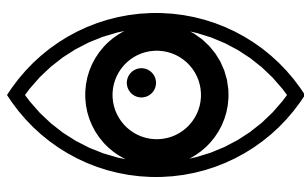
79% of aid workers experienced mental health issues.

93% said it was related to their work in the aid industry.



**LACK OF EMPLOYER SUPPORT**

66% of aid workers cited lack of support at work as the principal factor impacting on their mental health



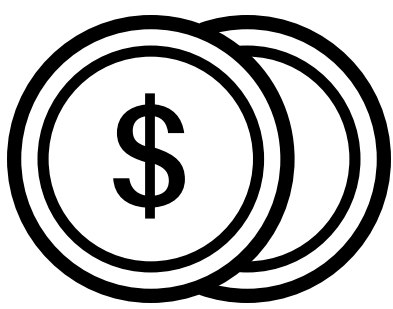
**ATTITUDES, STIGMA, & SILENCE**

84% of aid workers suffering mental health issues negatively impacting their work continued to work untreated



**BURNOUT DISALLOWS INNOVATION**

It is impossible to creatively innovate solutions to the big problems from a place of deep exhaustion



**THE COST**

\$62 billion per year in lost productivity

Global Development Professional Network (GDPN) survey, 2015  
Judith Sluiter article in Ergonomics, May 1999

**THE SOLUTION: RESILIENT INNOVATION**

